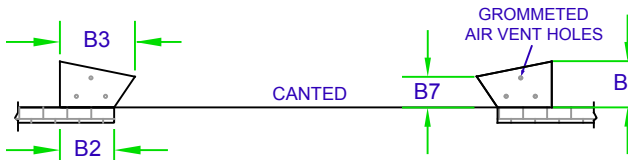
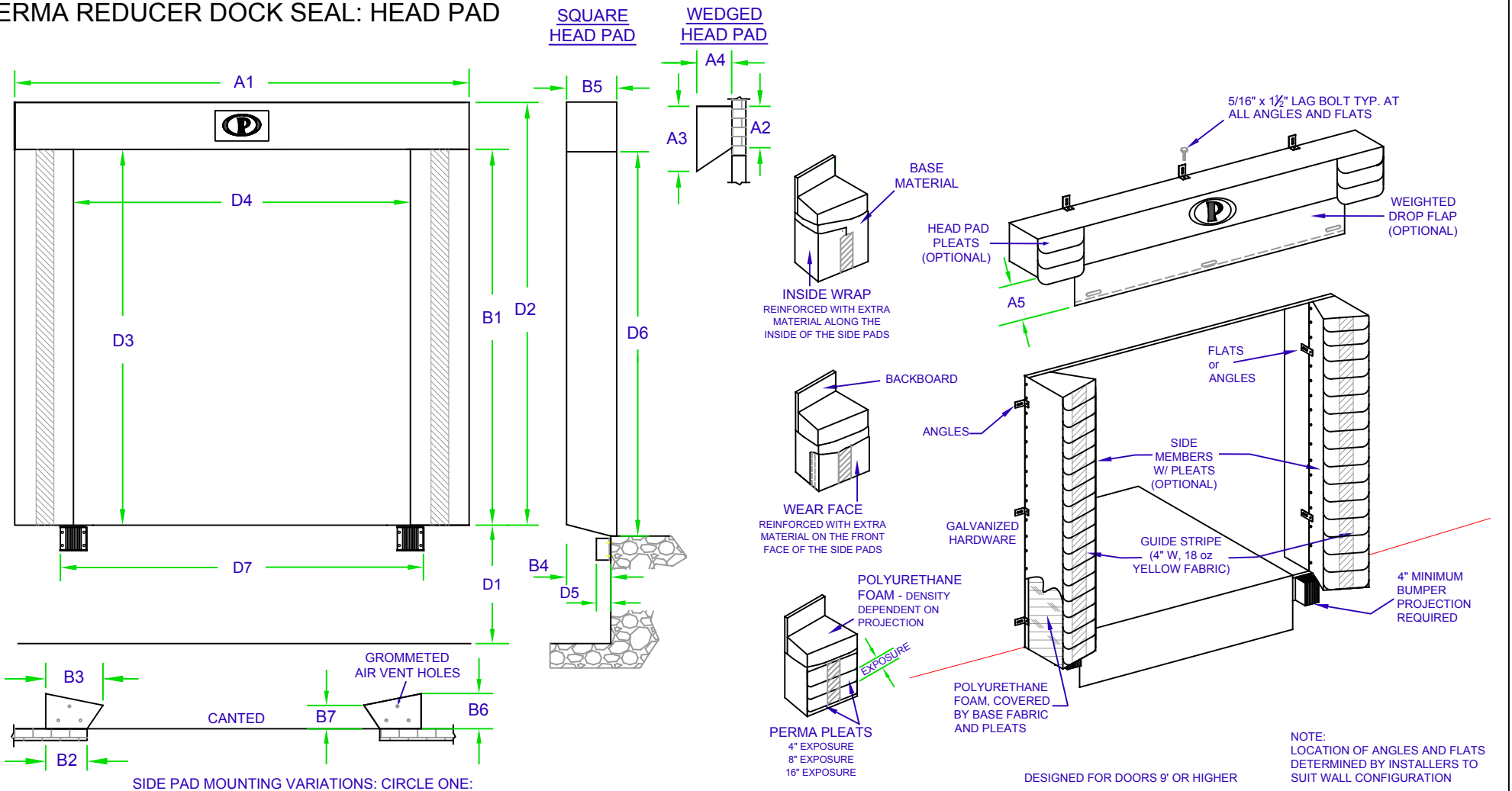
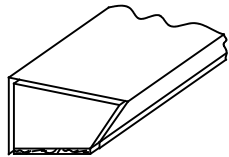


PERMA REDUCER DOCK SEAL: HEAD PAD

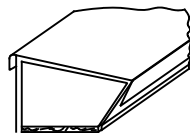


SIDE PAD MOUNTING VARIATIONS: CIRCLE ONE:

ENTER SIDE PAD
BASE WIDTH:



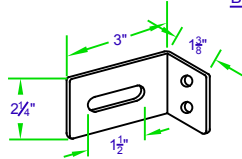
SINGLE BASE FABRIC



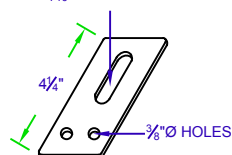
BASE FABRIC WITH
CONTACT FACE

GALVANIZED MOUNTING
BRACKETS

1/16" SLOT WIDTH



STANDARD ANGLE



STANDARD FLAT

<p>DIMS.</p> <p>A1 - _____" LENGTH</p> <p>A2 - _____" HEIGHT AT REAR</p> <p>A3 - _____" HEIGHT AT FACE</p> <p>A4 - _____" PROJECTION</p> <p>A5 - _____" DROP FLAP</p>		<p>HEAD PAD DATA:</p> <p>BACK BOARD - W: <input type="checkbox"/> S: <input type="checkbox"/></p> <p>MATERIAL - _____</p> <p>DROP FLAP: <input type="checkbox"/></p> <p>PERMA PLEATS: <input type="checkbox"/></p> <p>PLEAT MATERIAL - _____</p> <p>EXPOSURE - _____"</p>		<p>DIMS.</p> <p>D1 - _____" DOCK HEIGHT FROM GROUND</p> <p>D2 - _____" UNIT HEIGHT</p> <p>D3 - _____" INSIDE OPENING HEIGHT</p> <p>D4 - _____" INSIDE OPENING WIDTH</p>		<p>GENERAL INFO:</p> <p>APPROACH - DECLINE: <input type="checkbox"/> INCLINE: <input type="checkbox"/> LEVEL: <input type="checkbox"/></p> <p>D5 - _____" BUMPER PROJ.</p> <p>D6 - _____" DOOR HEIGHT</p> <p>D7 - _____" DOOR WIDTH</p>	
<p>DIMS.</p> <p>B1 - _____" LENGTH</p> <p>B2 - _____" WIDTH AT REAR</p> <p>B3 - _____" WIDTH AT FACE</p> <p>B4 - _____" PROJ. AT BOTTOM</p> <p>B5 - _____" PROJ. AT TOP</p> <p>B6 - _____" OUTSIDE PROJ.</p> <p>B7 - _____" INSIDE PROJ.</p>		<p>SIDE PAD DATA:</p> <p>BACK BOARD - W: <input type="checkbox"/> S: <input type="checkbox"/></p> <p>MATERIAL - _____</p> <p>WEAR FACE: <input type="checkbox"/></p> <p>INSIDE WRAP: <input type="checkbox"/></p> <p>PERMA PLEATS: <input type="checkbox"/></p> <p>PLEAT MATERIAL - _____</p> <p>EXPOSURE - _____"</p>		<p>PERMA TECH, INC.</p> <p>363 HAMBURG STREET • BUFFALO, NY 14204</p> <p>(716) 854-0707 • 1-800-DOC-SEAL</p> <p>www.permatechinc.com</p>			
<p>SPECIAL INFORMATION:</p>							
				<p>DEALER: _____</p>		<p>DATE: _____</p>	
				<p>CONTACT: _____</p>		<p>QUOTE #: _____</p>	
<p>APPROVED BY SIGNATURE: _____</p>							

NOTE:
LOCATION OF ANGLES AND FLATS
DETERMINED BY INSTALLERS TO
SUIT WALL CONFIGURATION

DESIGNED FOR DOORS 9' OR HIGHER